

# RETAIL SPACE FOR SALE



**600 Leonard St NW & 1152 Elizabeth Ave NW  
Grand Rapids, MI 49504**

**FOR SALE (TWO LOTS): \$275,000**

## Strategic Location & Excellant Redevelopment Potential

Prime redevelopment opportunity at Leonard St NW and Elizabeth intersection, in the bustling West Side area, close to Long Road Distillers and The Mitten Brewing Company. This listing includes the current A-1 Small Engine Repair property and an additional parcel. Ideal for investors or owner-users looking to revitalize its vintage charm or undertake a full redevelopment. Enjoy easy access to highways and the central business district.



<b>Square Footage</b>	<b>1,432</b>
<b>Listing Price/SF</b>	<b>\$244.41</b>
<b>Lot Size (approx)</b>	<b>10,106 sqft</b>
<b>County</b>	<b>Kent</b>
<b>Zoning</b>	<b>TN-TBA</b>
<b>Municipality</b>	<b>Grand Rapids</b>

# FEATURES

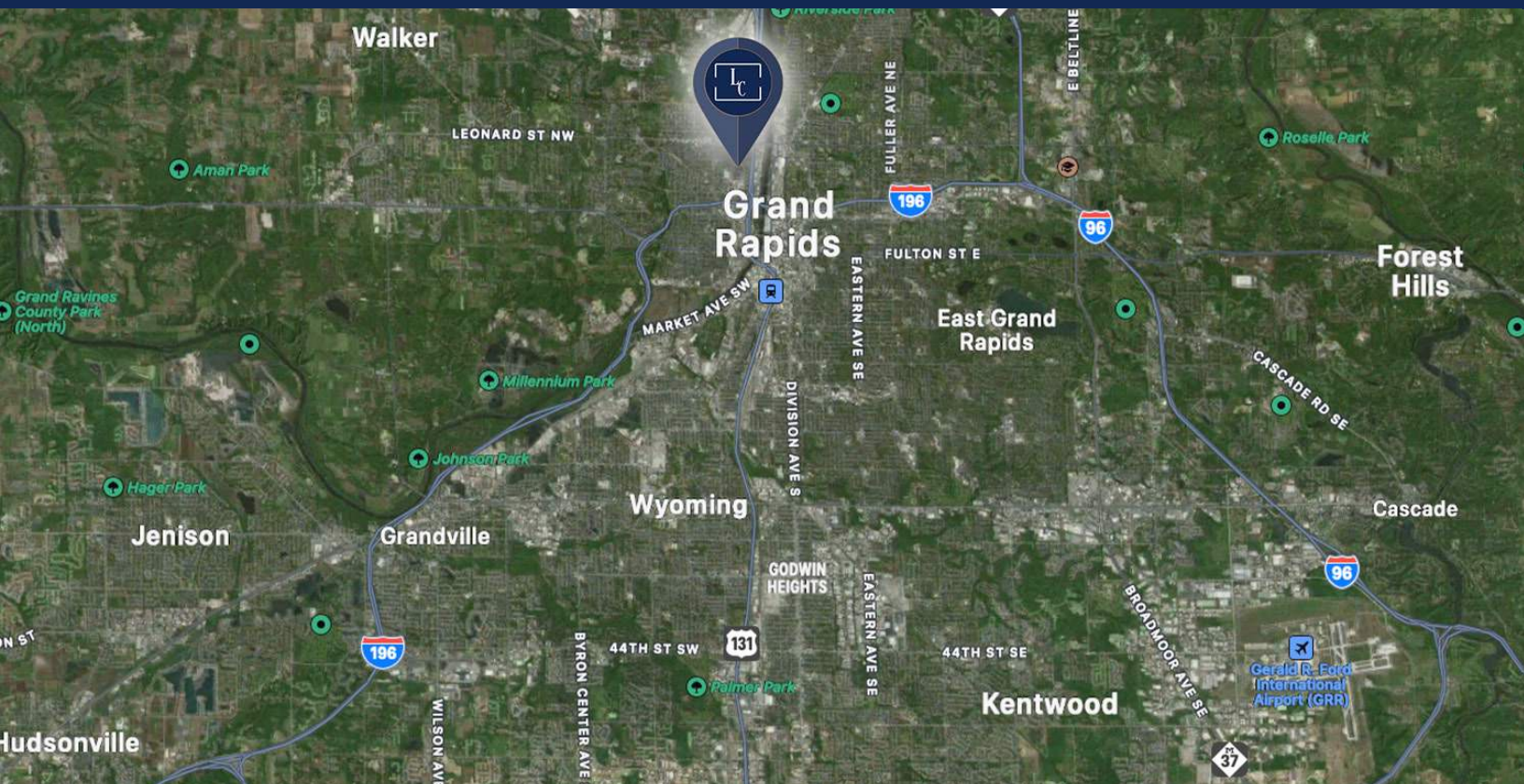
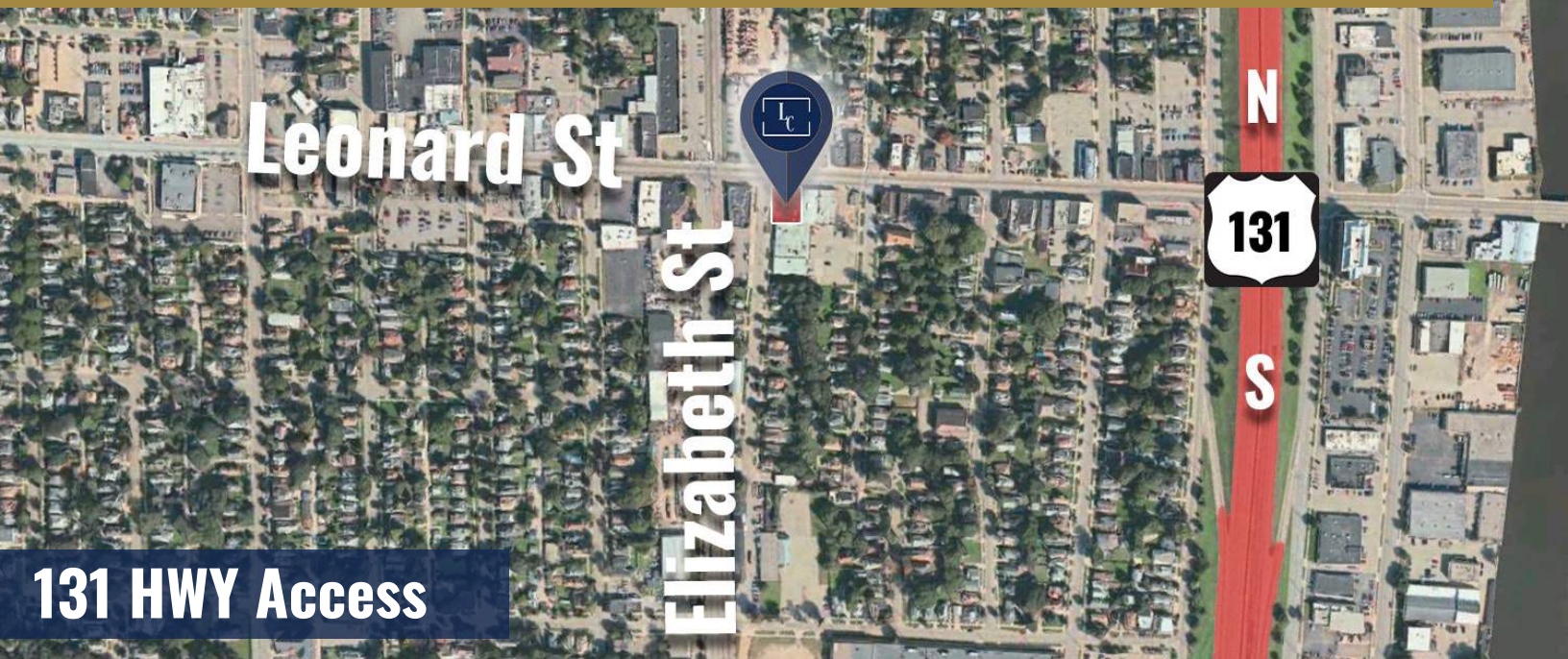


600 Leonard St NW & 1152 Elizabeth Ave NW

# RETAIL SPACE FOR SALE



LACUNA COMMERCIAL  
Advisors



Doug Todd  
Sr. Commercial Advisor

LacunaCRE.com

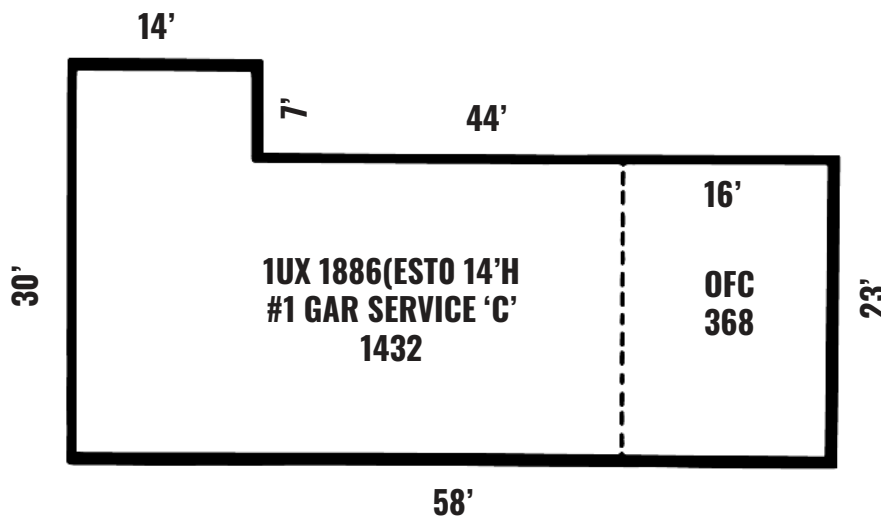
(616) 340-7230  
Doug@lacunaCRE.com



# RETAIL SPACE FOR SALE



LACUNA COMMERCIAL  
Advisors



## BUILDING FOOTPRINT