

**FOR LEASE 3,900 - 5,110 SF**



**Rare Light Industrial & Warehouse Space**  
**Near M-57 and Downtown Greenville**

**300 W Greenville W Dr, Greenville, MI 48838**



**LACUNA COMMERCIAL**  
Advisors

Doug Todd  
(616) 340-7230  
Doug@lacunaCRE.com

Real Estate Driven by Relationships

# LIGHT INDUSTRIAL FOR LEASE



**LACUNA COMMERCIAL**  
Advisors



**OPTION A: \$7.50 PSF (NNN) - 5,110 SF**  
**OPTION B: \$8.00 PSF (NNN) - 3,900 SF**

## Strategic Industrial Space for Lease in Greenville – Minutes from M-57 & Retail Corridor

Located at 300 W Greenville Dr in Greenville, MI, this light industrial and warehouse lease opportunity offers outstanding functionality and visibility in a growing market. The property features multiple 14-foot garage doors, making it ideal for loading, distribution, or light manufacturing operations.

There are two flexible lease options available: 5,110 square feet at \$7.50 per square foot (NNN) and 3,900 square feet at \$8.00 per square foot (NNN). These options make it a suitable choice for a variety of users.

Positioned near M-57 and just minutes from downtown Greenville, the site provides convenient access to Meijer, Walmart, and several national retailers and restaurants. With US-131 only 20 miles away, this location offers strong regional connectivity and represents a rare industrial leasing opportunity in the Greenville area.

## Property Features

LEASE SPACE SIZE	5,110 - 3,900 SF
ACCESSIBILITY	MULTIPLE 14' x 10' OVERHEAD DOORS
PARCEL NO.	052-700-009-40
ZONING	C2
COUNTY	MONTCALM
CITY	GREENVILLE
USAGE	LIGHT INDUSTRIAL/WAREHOUSE



**Doug Todd**  
(616) 340-7230  
Doug@LacunaCRE.com

DISCLAIMER: INFORMATION IS BELIEVED TO BE ACCURATE, BUT BUYERS SHALL  
COMPLETE THEIR INDEPENDENT DUE DILIGENCE.

**Lacuna Commercial Advisors**  
(844) 222-9405  
LacunaCRE.com



LacunaCRE.com

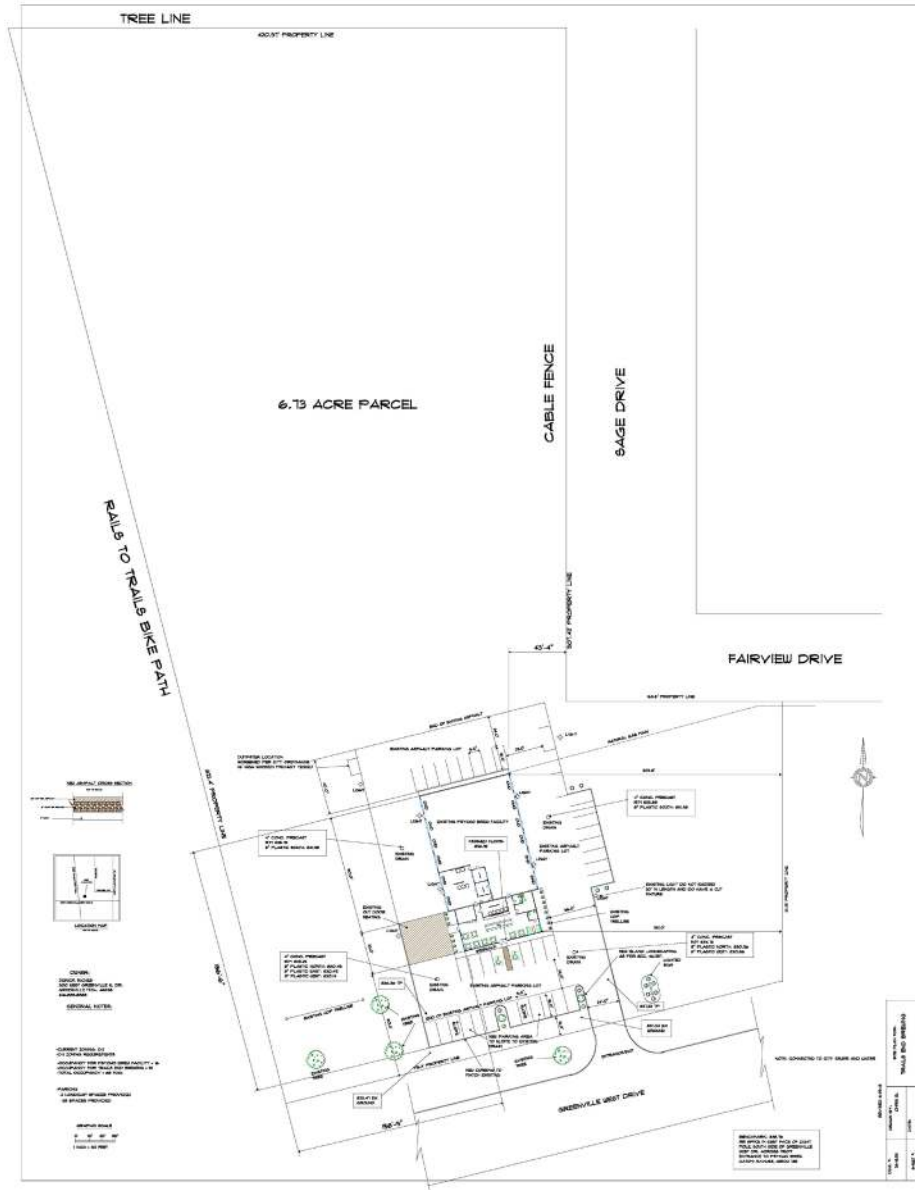
**DISCLAIMER: INFORMATION IS BELIEVED TO BE ACCURATE, BUT BUYERS SHALL COMPLETE THEIR INDEPENDENT DUE DILIGENCE.**



# LIGHT INDUSTRIAL FOR LEASE



LACUNA COMMERCIAL  
Advisors



# SURVEY

Doug Todd  
(616) 340-7230  
Doug@LacunaCRE.com

Lacuna Commercial Advisors

(844) 222-9405

LacunaCRE.com

DISCLAIMER: INFORMATION IS BELIEVED TO BE ACCURATE, BUT BUYERS SHALL  
COMPLETE THEIR INDEPENDENT DUE DILIGENCE.

# LIGHT INDUSTRIAL FOR LEASE



LACUNA COMMERCIAL  
Advisors



Doug Todd  
(616) 340-7230  
Doug@LacunaCRE.com

Lacuna Commercial Advisors  
(844) 222-9405  
LacunaCRE.com

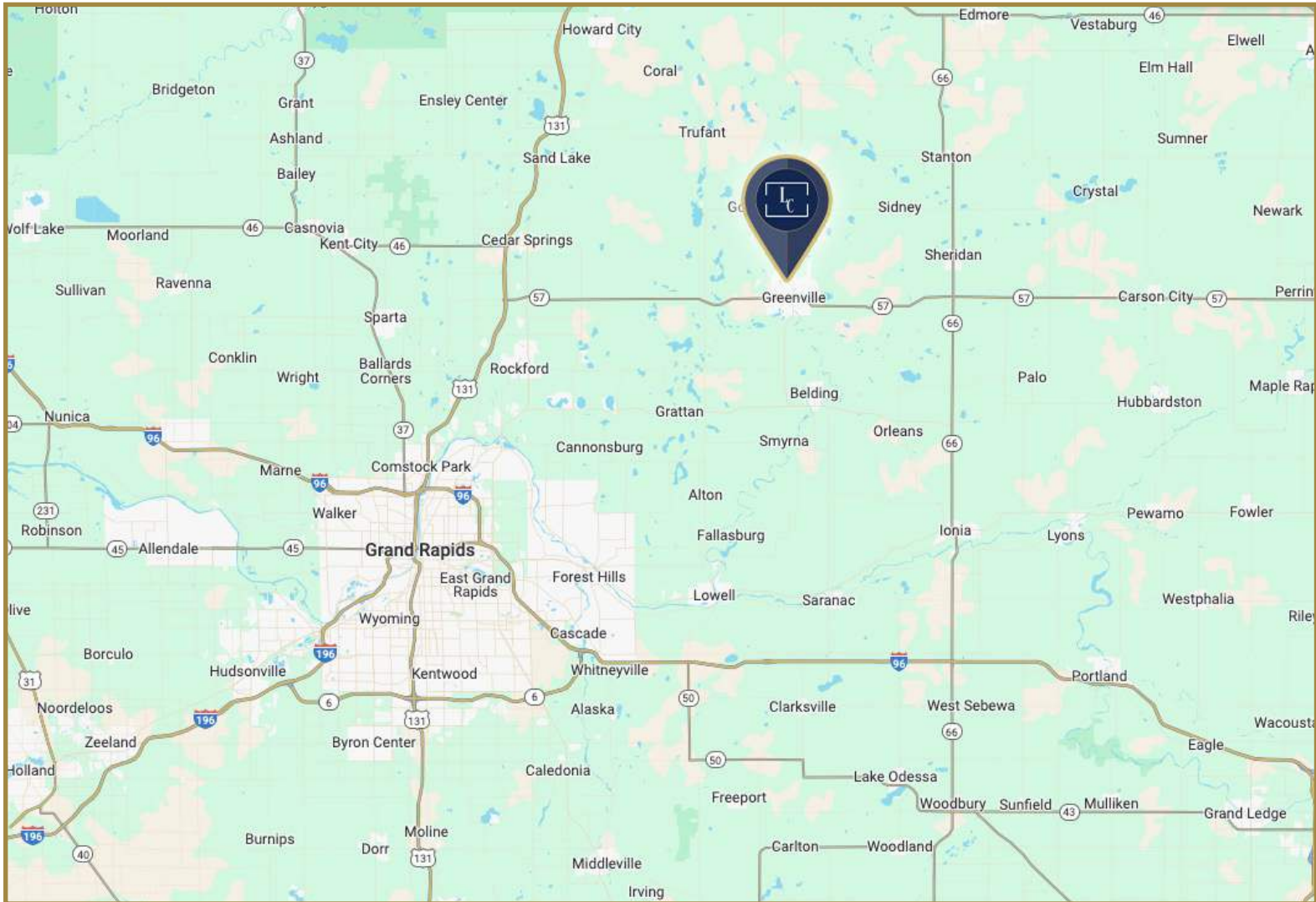
DISCLAIMER: INFORMATION IS BELIEVED TO BE ACCURATE, BUT BUYERS SHALL  
COMPLETE THEIR INDEPENDENT DUE DILIGENCE.



# LIGHT INDUSTRIAL FOR LEASE



LACUNA COMMERCIAL  
Advisors



## PROPERTY LOCATION

**Doug Todd**  
(616) 340-7230  
Doug@LacunaCRE.com

**Lacuna Commercial Advisors**  
(844) 222-9405  
LacunaCRE.com

DISCLAIMER: INFORMATION IS BELIEVED TO BE ACCURATE, BUT BUYERS SHALL  
COMPLETE THEIR INDEPENDENT DUE DILIGENCE.

# LIGHT INDUSTRIAL FOR LEASE



LACUNA COMMERCIAL  
Advisors



**Doug Todd**  
(616) 340-7230  
[Doug@LacunaCRE.com](mailto:Doug@LacunaCRE.com)

DISCLAIMER: INFORMATION IS BELIEVED TO BE ACCURATE, BUT BUYERS SHALL  
COMPLETE THEIR INDEPENDENT DUE DILIGENCE.

**Lacuna Commercial Advisors**  
(844) 222-9405  
[LacunaCRE.com](http://LacunaCRE.com)



# LIGHT INDUSTRIAL FOR LEASE



LACUNA COMMERCIAL  
Advisors



**Doug Todd**  
(616) 340-7230  
[Doug@LacunaCRE.com](mailto:Doug@LacunaCRE.com)

DISCLAIMER: INFORMATION IS BELIEVED TO BE ACCURATE, BUT BUYERS SHALL  
COMPLETE THEIR INDEPENDENT DUE DILIGENCE.

**Lacuna Commercial Advisors**  
(844) 222-9405  
[LacunaCRE.com](http://LacunaCRE.com)