

FOR SALE/LEASE 17,300 - 25,600 SF



High Exposure Flex Use Commercial Property
Near 28th St, Woodland Mall, & Centerpoint Mall

2885 Lake Eastbrook BLVD SE, Kentwood, MI



LACUNA COMMERCIAL
Advisors

Doug Todd
(616) 340-7230
Doug@lacunaCRE.com

Real Estate Driven by Relationships

FLEX SPACE FOR SALE/LEASE



LACUNA COMMERCIAL
Advisors



FOR SALE: \$2,785,000 - 25,600 SF
FOR LEASE: \$10.75 (NNN) - 25,600 SF
FOR LEASE: \$11.75 (NNN) - 17,300 SF

Rare Flex Space Near 28th Street – Perfect for Retail, Office, Event Space, Warehouse or Light Industrial!

This 25,600-square-foot pre-engineered steel building is ideally located at the intersection of Lake Eastbrook Blvd and 29th St, just off 28th St—one of the busiest retail corridors in Grand Rapids. The property offers high visibility and benefits from strong traffic counts, surrounded by major retailers such as Woodland Mall, CenterPoint Mall, Trader Joe’s, Lowe’s, and Dave & Buster’s.

Currently occupied by Broadleaf and Action Outfitters on a short-term lease, the property provides flexibility for a lease extension or the opportunity for an owner-user to occupy the space. With its prime location, strong market presence, and dynamic commercial surroundings, this property is an excellent investment or business opportunity in one of Grand Rapids’ most desirable retail hubs.

Property Features

BUILDING SIZE	25,600 SF
LOT SIZE	1.94 ACRES
TRAFFIC COUNT	7,000+
ZONING	C2
COUNTY	KENT
CITY	KENTWOOD
INTERNET	MULTIPLE HIGH SPEED PROVIDERS



Doug Todd
(616) 340-7230
Doug@LacunaCRE.com

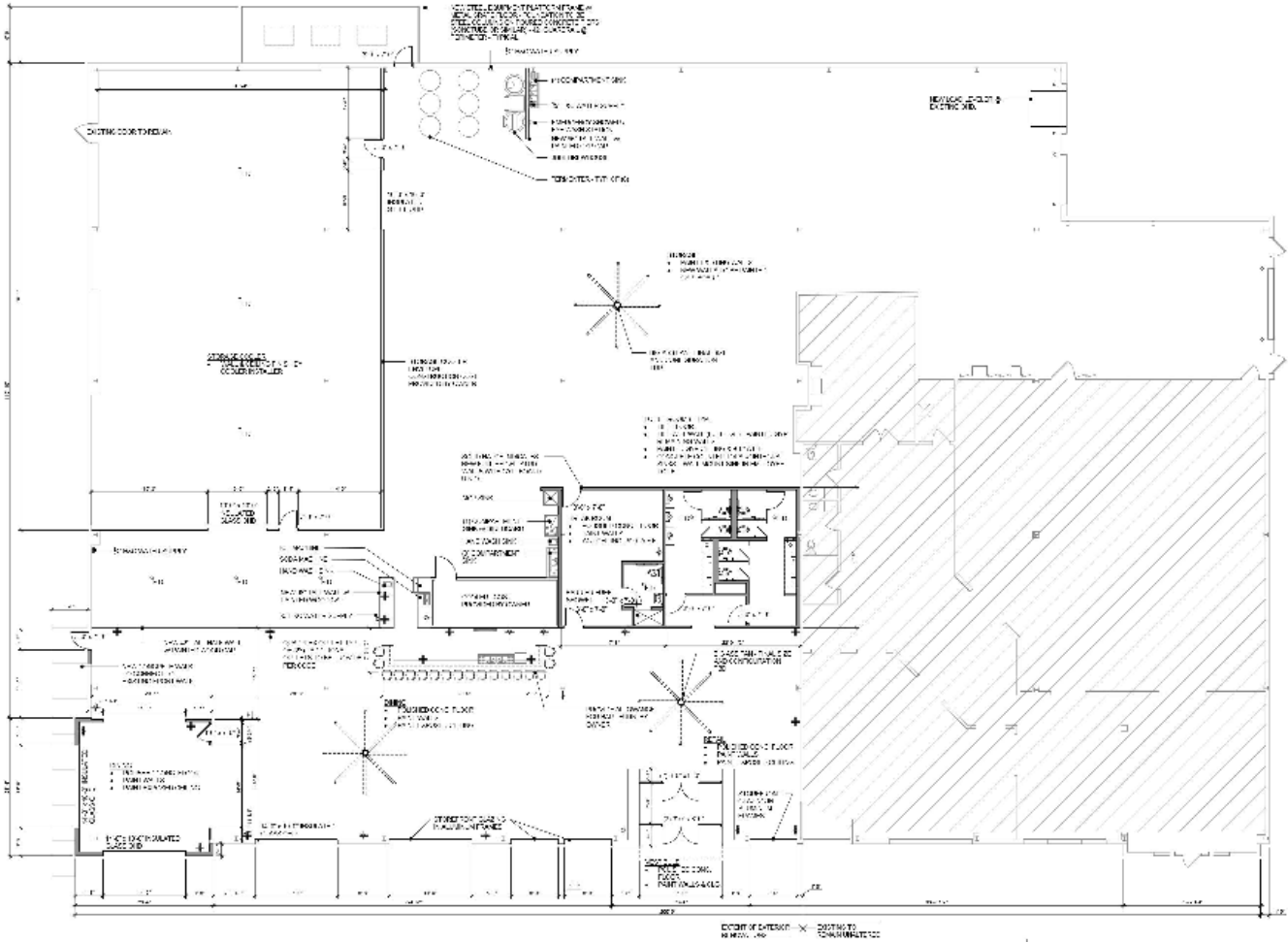
Lacuna Commercial Advisors
(844) 222-9405
LacunaCRE.com

DISCLAIMER: INFORMATION IS BELIEVED TO BE ACCURATE, BUT BUYERS SHALL COMPLETE THEIR INDEPENDENT DUE DILIGENCE.

FLEX SPACE FOR SALE/LEASE



LACUNA COMMERCIAL
Advisors



FLOOR PLAN

Doug Todd
(616) 340-7230
Doug@LacunaCRE.com

Lacuna Commercial Advisors

(844) 222-9405

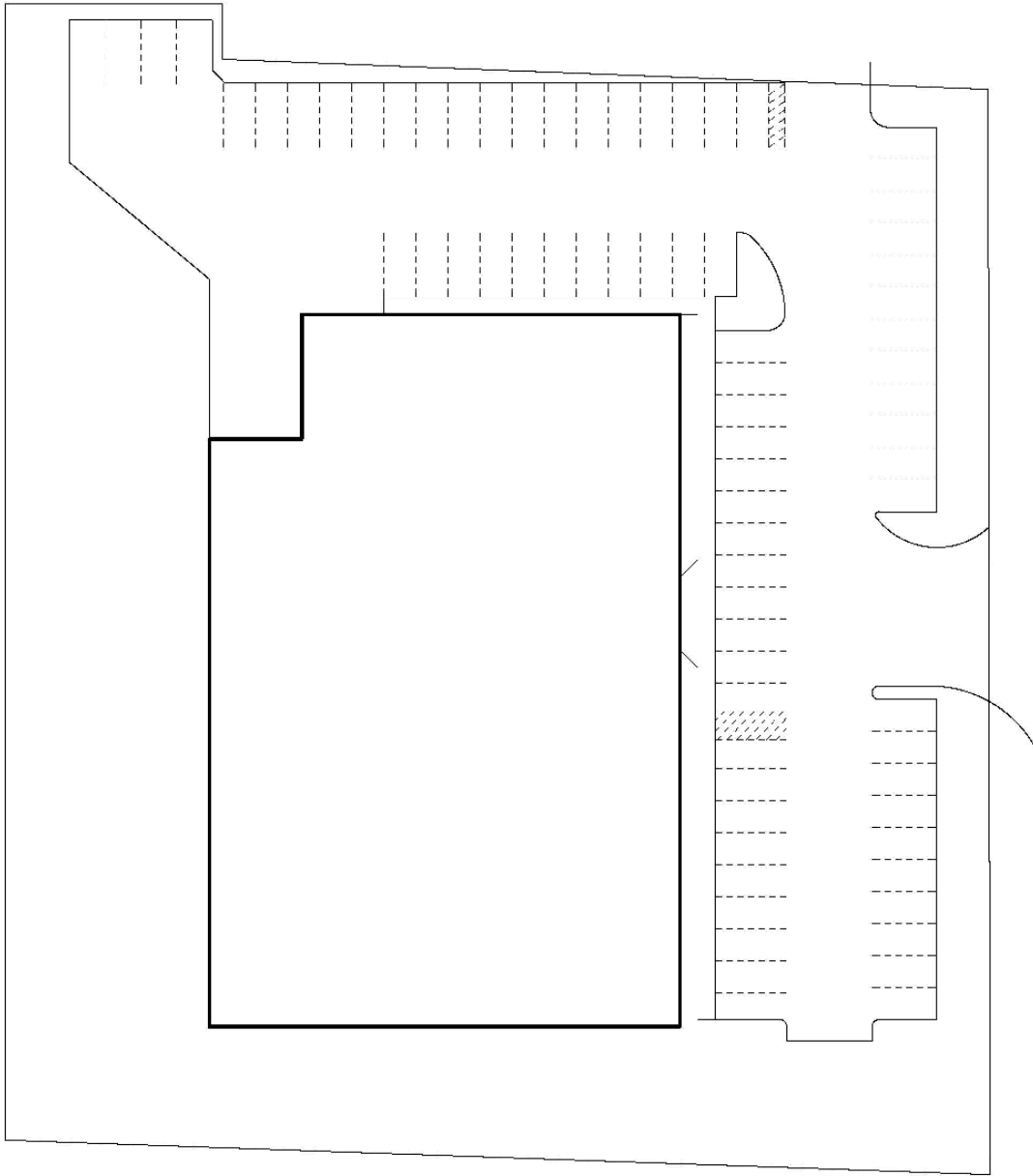
LacunaCRE.com

DISCLAIMER: INFORMATION IS BELIEVED TO BE ACCURATE, BUT BUYERS SHALL COMPLETE THEIR INDEPENDENT DUE DILIGENCE.

FLEX SPACE FOR SALE/LEASE



LACUNA COMMERCIAL
Advisors



PARKING



Doug Todd
(616) 340-7230
Doug@LacunaCRE.com

Lacuna Commercial Advisors

(844) 222-9405

LacunaCRE.com

DISCLAIMER: INFORMATION IS BELIEVED TO BE ACCURATE, BUT BUYERS SHALL COMPLETE THEIR INDEPENDENT DUE DILIGENCE.

FLEX SPACE FOR SALE/LEASE



LACUNA COMMERCIAL Advisors



Doug Todd
(616) 340-7230
Doug@LacunaCRE.com

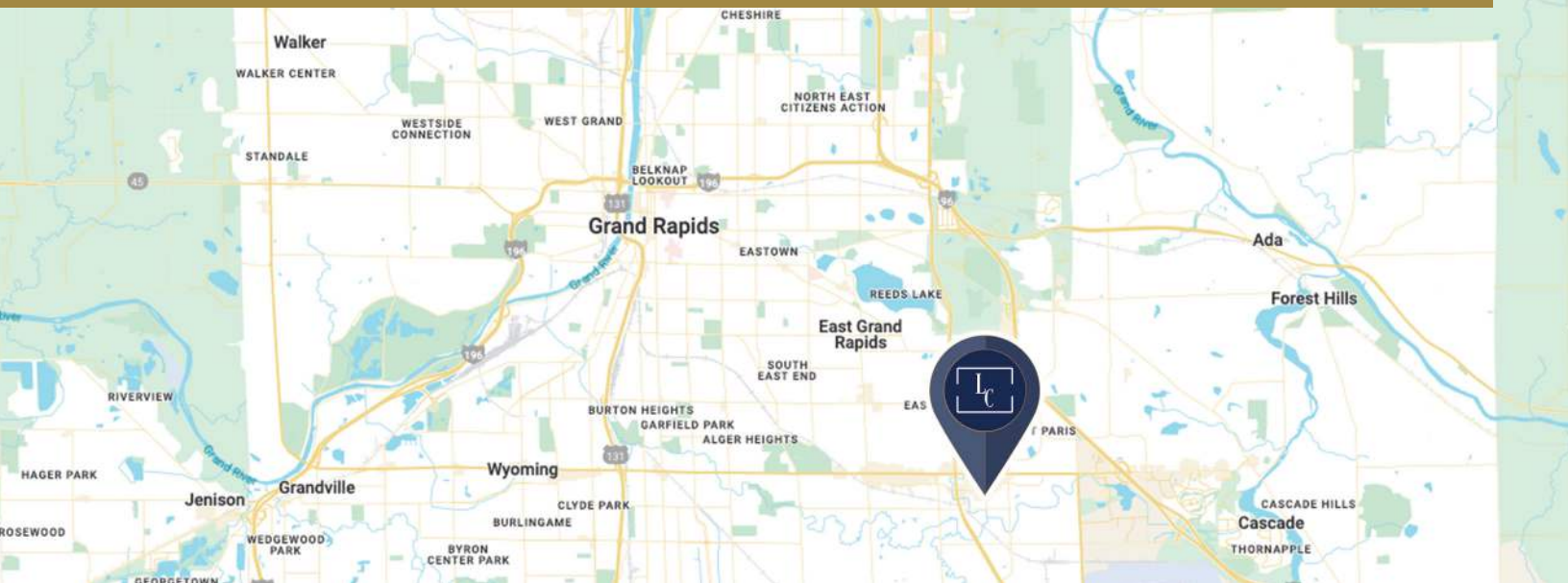
Lacuna Commercial Advisors
(844) 222-9405
LacunaCRE.com

DISCLAIMER: INFORMATION IS BELIEVED TO BE ACCURATE, BUT BUYERS SHALL COMPLETE THEIR INDEPENDENT DUE DILIGENCE.

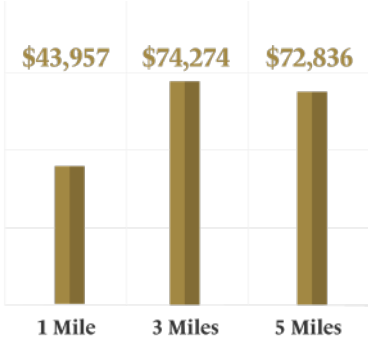
FLEX SPACE FOR SALE/LEASE



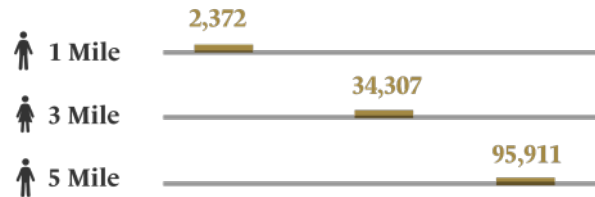
LACUNA COMMERCIAL
Advisors



HOUSEHOLD INCOME



POPULATION



NUMBER OF HOUSEHOLDS



DEMOGRAPHICS

Doug Todd

(616) 340-7230

Doug@LacunaCRE.com

Lacuna Commercial Advisors

(844) 222-9405

LacunaCRE.com

DISCLAIMER: INFORMATION IS BELIEVED TO BE ACCURATE, BUT BUYERS SHALL COMPLETE THEIR INDEPENDENT DUE DILIGENCE.

FLEX SPACE FOR SALE/LEASE



LACUNA COMMERCIAL
Advisors



Doug Todd
(616) 340-7230
Doug@LacunaCRE.com

Lacuna Commercial Advisors
(844) 222-9405

LacunaCRE.com

DISCLAIMER: INFORMATION IS BELIEVED TO BE ACCURATE, BUT BUYERS SHALL COMPLETE THEIR INDEPENDENT DUE DILIGENCE.

FLEX SPACE FOR SALE/LEASE



LACUNA COMMERCIAL
Advisors



Doug Todd
(616) 340-7230
Doug@LacunaCRE.com

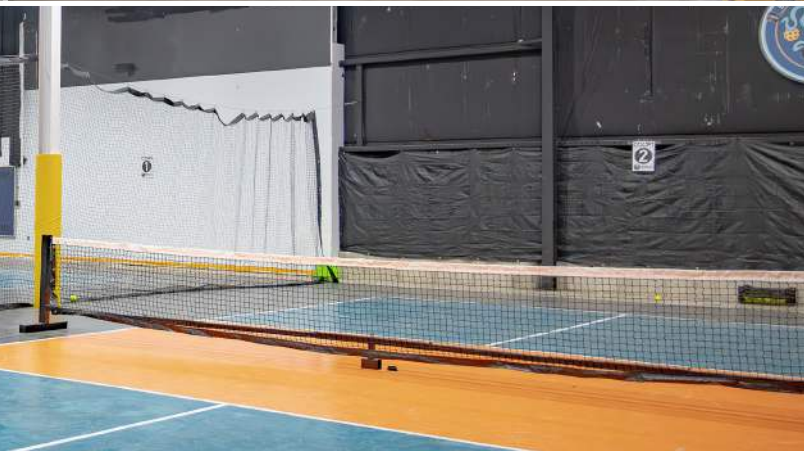
Lacuna Commercial Advisors
(844) 222-9405
LacunaCRE.com

DISCLAIMER: INFORMATION IS BELIEVED TO BE ACCURATE, BUT BUYERS SHALL COMPLETE THEIR INDEPENDENT DUE DILIGENCE.

FLEX SPACE FOR SALE/LEASE



LACUNA COMMERCIAL
Advisors



Doug Todd
(616) 340-7230
Doug@LacunaCRE.com

Lacuna Commercial Advisors
(844) 222-9405
LacunaCRE.com

DISCLAIMER: INFORMATION IS BELIEVED TO BE ACCURATE, BUT BUYERS SHALL COMPLETE THEIR INDEPENDENT DUE DILIGENCE.

FLEX SPACE FOR SALE/LEASE



LACUNA COMMERCIAL
Advisors



Doug Todd
(616) 340-7230
Doug@LacunaCRE.com

Lacuna Commercial Advisors
(844) 222-9405

LacunaCRE.com

DISCLAIMER: INFORMATION IS BELIEVED TO BE ACCURATE, BUT BUYERS SHALL COMPLETE THEIR INDEPENDENT DUE DILIGENCE.